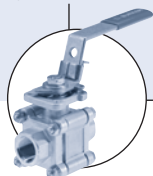


## 3003HQ



Type 3003HQ can be combined with...



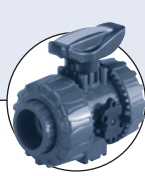
**Type 2650-3**

3-piece  
Ball valve



**Type 2650-FL**

Flange end  
Ball valve



**Type 2657**

Plastic  
Ball valve



**Type ST2670**

Metal  
Butterfly valve



**Type 2670FE**

Plastic  
Butterfly valve

## Electric Rotary Actuator for Quarter-Turn Valves

- Direct mounting for quarter-turn valves
- Manual override in standard
- Corrosion resistant
- Adjustable limit switches

The rotary actuator type 3003 is a compact and powerful actuator system which provides a long service life.

Materials and components have been chosen for maintenance-free operation even in aggressive environments and ensure low thermal loading on the actuator. The modular design offers many options such as extra limit switches, potentiometer, proportional control unit etc.

### **i** Further versions on request

- Explosion proof enclosure  
Eexd II B T4, Eexd II C T4)
- Water proof enclosure ( IP68 )
- Local control unit c/w  
remote /open/ close/ selector switch
- Rechargeable battery pack for  
power failure control
- Extension 120°, 180°, 270° turn
- 24V DC motor

Technical data	
<b>Power supply</b>	110 /220 AC, 50 /60 Hz, 380V AC 3PH / 50/60 Hz
<b>Control power supply</b>	115 or 220 V AC, 50/60 Hz
Tolerance	+/- 10%
<b>Duty rating ( on-off duty)</b>	30% of the time
<b>Motor</b>	Squirrel caged induction motor
<b>Electrical connection</b>	Two 3/4" Conduit
<b>Angle of rotation</b>	90° (+/- 10°)
<b>Torque</b>	80 to 3000 Nm (see specification)
<b>90° rotation time</b>	13 to 112 s (see specification)
<b>ISO fixation</b>	acc. ISO 5211 F07 to F16 (see specification)
<b>Limit switches</b>	2 x open/close, SPDT, 250V AC 10 A
<b>Additional limit switches</b>	2 x open/close, SPDT, 250V AC 10 A (except HQ-008)
<b>Torque switched</b>	2 x open/close, SPDT, 250V AC 10 A ( except 80NM actuator)
<b>Manual override</b>	Declutching mechanism
<b>Mechanical limit stops</b>	2 x external adjustable screws
<b>Visual position indicator</b>	Standard
<b>Material</b>	Steel, Aluminium alloy, Al bronze, Polycarbonate
<b>Protection class</b>	IP67 with connectors plugged-in
<b>External coating</b>	Dry powder, Polyester, Munsell no. 5R 3.5/12
<b>Anti vibration</b>	X Y Z 10g, 0.2-34 Hz, 32 minutes
<b>Ambient Humidity</b>	90% RH max. , non-condensing
<b>Ambient temperature</b>	-10 °C to +70 °C ( except option electronic card)
<b>Weight</b>	7.4 to 75 Kg per ( see specification)

## Specification

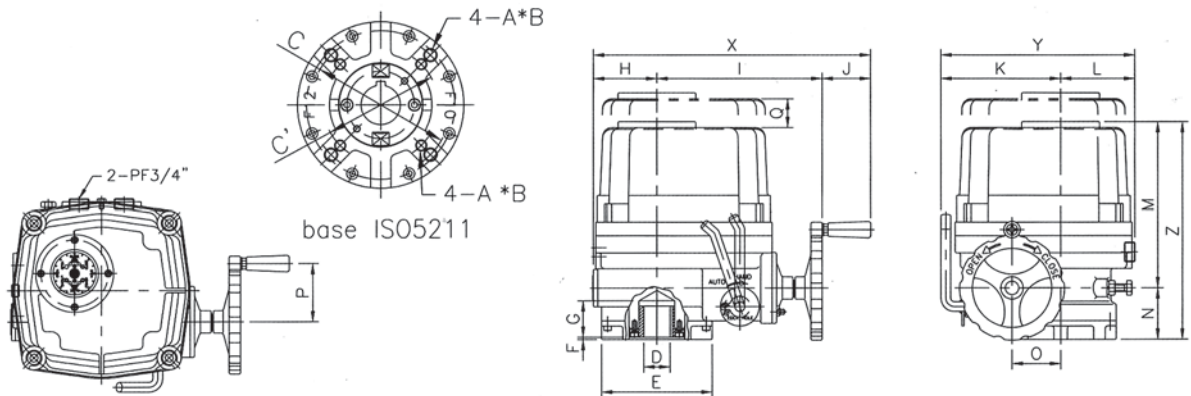
Max. bore size [mm]	Fixation flange	Motor Class F frame size [W*F]	Max. output Torque [Nm]	Number of handle turn	90° rotation time 60/50Hz [s]	Rated current 60/50Hz (A)	Voltage / frequency [V / Hz]	Weight ( Kg)	Model
20	F07	15*70	80	10	13/16	1.10/0.95	110 V AC	7.4	HQ-008
						0.55/0.54	220V AC		
22	F07/F10	40*80	150	11	21/25	1.65/1.67	110 V AC	16.6	HQ-015
						0.88/0.84	220V AC		
						0.31/0.31	380V 3 Ph		
						0.30/0.31	440V 3 Ph		
22	F07/F10	40*80	200	11	21/25	1.67/1.67	110V AC	16.6	HQ-020
						0.89/0.85	220V AC		
						0.31/0.31	380V 3 Ph		
						0.30/0.31	440V 3 Ph		
35	F10/F12	40*90	300	13.5	26/31	1.85/1.86	110 V AC	22	HQ-030
						0.92/0.92	220V AC		
						0.35/0.35	380V 3 Ph		
						0.34/0.34	440V 3 Ph		
35	F10/F12	40*90	500	13.5	26/31	3.60/3.62	110 V AC	23	HQ-050
						1.55/1.58	220V AC		
						0.59/0.59	380V 3 Ph		
						0.58/0.58	440V 3 Ph		
35	F10/F12	90*90	600	13.5	26/31	3.65/3.62	110V AC	23	HQ-060
						1.60/1.62	220V AC		
						0.60/0.59	380V 3 Ph		
						0.59/0.58	440V 3 Ph		
45	F12/F14	90*90	800	16.5	31/37	4.10/4.10	110 V AC	29	HQ-080
						2.15/2.20	220V AC		
						0.85/0.85	380V 3 Ph		
						0.79/0.79	440V 3 Ph		
45	F12/F14	180*90	1200	16.5	31/37	4.20/4.10	110 V AC	29	HQ-120
						2.35/2.30	220V AC		
						0.87/0.87	380V 3 Ph		
						0.81/0.81	440V 3 Ph		
65	F14/F16	180*90	2000	49.5	93/112	4.10/4.10	110V AC	75	HQ-200
						2.35/2.30	220V AC		
						0.85/0.85	380V 3 Ph		
						0.79/0.79	440V 3 Ph		
65	F14/F16	180*90	3000	49.5	93/112	4.20/4.10	110 V AC	75	HQ-300
						2.35/2.30	220V AC		
						0.87/0.87	380V 3 Ph		
						0.81/0.81	440V 3 Ph		

# 3003HQ

## Dimensions [mm]

Model	Base ISO 5211	A	D (MAX)	E	F	G	H	I	J	K	L	M	N	O	P	Q	R	S	X	Y	Z
	φ C	B																			
HQ008	F07	M8	20	88	3	32	50	157	51	100	70	167	53	40	60	120	-	-	258	170	220
HQ015	F07/F10	M8/M10	22	125	3	42	73	200	65	142	87	192	68	54	78	160	-	-	338	229	260
	φ 70/φ 102	12/15																			
HQ020	F07/F10	M8/M10	22	125	3	42	73	200	65	142	87	192	68	54	78	160	-	-	338	229	260
	φ 70/φ 102	12/15																			
HQ030	F10/F12	M10/M12	35	148	3	49	82	221	65	160	99	221	69	65	78	180	-	-	368	259	290
	φ 102/φ 125	15/18																			
HQ050	F10/F12	M10/M12	35	148	3	49	82	221	65	160	99	221	69	65	78	180	-	-	368	259	290
	φ 102/φ 125	15/18																			
HQ060	F10/F12	M10/M12	35	148	3	49	103	221	65	160	99	221	69	65	78	180	-	-	368	259	290
	φ 102/φ 125	15/18																			
HQ080	F12/F14	M12/M16	45	178	3	57	103	242	65	186	111	241	74	78	110	210	-	-	410	297	315
	φ 125/φ 140	18/24																			
HQ120	F12/F14	M12/M16	45	178	3	57	103	242	65	186	111	241	74	78	110	210	-	-	410	297	315
	φ 125/φ 140	18/24																			
HQ200	F14*/F16	M16*/M20	65	245	5	90	103	242	65	186	133	241	74	78	110	210	233	133	410	319	548
	φ 140*/φ 165	24*/30																			
HQ300	F14*/F16	M16*/M20	65	245	5	90	103	242	65	186	133	241	74	78	110	210	233	133	410	319	548
	φ 140*/φ 165	24*/30																			

### HQ008, HQ015, HQ020, HQ030, HQ050, HQ060, HQ080, HQ120



### HQ 200, HQ300

